

3 FUNCTION 24 RANGES

Model LCR 459

SPECIAL FEATURES :

- Dual Displays provide quick tested results readouts, with L.C.R. display values up to 19999 counts and Q.D.R. display values up to 9999 counts
- Test 4 parameters : Ls+(Q,D,Rs), Lp+(Q,D,Rp), Cs+(Q,D,Rs), Cp+(Q,D,Rp)
- RS-232 PC Interface
- External DC Adapter functions
- Set Hi / Lo limits using absolute values or percentage limits.

FEATURES :

- Backlight Display.
- Damaged or open fuse detection function.
- Strong Protective Holster.
- Max / Min / Avg recording.
- Auto-Power Off
- Built-in test fixture or use external Test Leads
- Relative mode with zero reference or user supplied reference.
- Automatic blown fuse indication.

GENERAL SPECIFICATIONS :

- * **Basic Accuracy** : ±0.5% for resistance, ±0.7% for Inductance & ±0.7% Capacitance
- * **Display** : L|C|R - 4 1/2 digits, max. reading of 19999. Q|D|R - 4 digits, max. reading of 9999. (Auto range).
- * **Parameter** : Ls+(Q,D,Rs), Lp+(Q,D,Rp), Cs+(Q,D,Rs)
- * **Measurement** : Cp+(Q,D,Rp)
- * **Overload indication** : "OL" is displayed.
- * **Test Frequency** : 1KHz and 120Hz.
- * **Range Mode** : Auto and Manual.
- * **Measurement rate** : Approx. 1 time per second, nominal
- * **Operating Temperature** : 0°C - 50°C at <80% R.H.
- * **Storage Temperature** : -20°C-60°C at <80% R.H. with battery removed.
- * **Power** : Single standard 9V battery.
- * **External Power** : Min.12V, Max.15V & at least minimum 50mA.
- * **Dimensions** : 192(H) x 91(W) x 52.5mm(D)
- * **Weight** : 365g. (including battery & holster)

ACCESSORIES :

Test leads pair, Carrying Case, User's Manual, One Spare fuse & 9V Battery & PC interface software CD

ELECTRICAL SPECIFICATIONS- LCR 459

Accuracy is ± (% reading digits + counts)

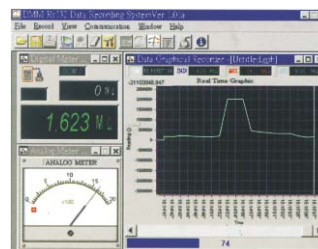
INDUCTANCE, CAPACITANCE & RESISTANCE

Range	Resolution	Accuracy	
		1kHz	120Hz
L	10000 H	1 H	Not specified
	2000 H	100 mH	Not specified
	200 H	10 mH	±(1.0%+5)
	20 H	1 mH	±(0.7%+5)
	2000 mH	100 H	±(0.7%+5)
	200 mH	10 H	±(0.7%+5)
	20 mH	1 H	±(1.2%+5)
C	2000 H	0.1 H	±(2.0%+5)
	20 mF	1 F	±(5.0%+5)
	2000 F	100 nF	±(5.0%+5)
	200 F	10 nF	±(1.0%+5)
	20 F	1 nF	±(0.7%+3)
	2000 nF	100 pF	±(0.7%+3)
	200 nF	10 pF	±(0.7%+3)
	20 nF	1 pF	±(0.7%+3)
R	2000 pF	0.1 pF	±(1.0%+5)
	10 M	1 K	±(2.0%+8)
	2 M	100	±(0.5%+5)
	200 K	10	±(0.5%+3)
	20 K	1	±(0.5%+3)
	2 K	100 m	±(0.5%+3)
	200	10 m	±(0.8%+5)
20	1 m	±(1.2%+8)	

In 20 range, effective reading is over 20 counts.



Software CD



Software

All Specifications are subject to change without prior notice