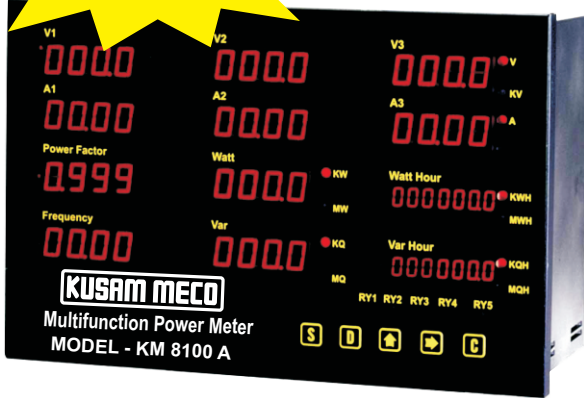


**ONLY INST.
IN INDIA
WITH 12 DISPLAY**

Model - KM 8100 A



UNIQUE FEATURES :

- Displays 12 parameters simultaneously : 3 V, 3 A, W, Var, WH, VarH, PF, Hz
- Applicable Standard : DIN IEC 688
- Suitable for : 1 2 W ; 1 3 W ; 3 3 W ; 3 4 W systems
- 10 Years Power - Off Memory for set data
- With RS - 485 Modbus Output
- Software for Load Analysis (optional).
- User friendly programming.

GENERAL SPECIFICATIONS :

INPUT :

- * Input Voltage Range : Voltage : 55 ~ 300 V AC, or 300 ~ 600 V AC, 45 ~ 65 Hz
P.T. Ratio programmable upto 9999 / KV
- * Input Voltage Over Range : Voltage : 200% Continuous, 300% of rating for 10sec.
- * Input Current Range : Current : 110 % for rating, 0 - 1A or 0 - 5A,
C. T. Ratio Programmable upto 9999 / 5 A.
- * Input Current Over Range : Current : 400% Continuous, 2000% of rating for 10sec.
- * Input Frequency : 45 Hz ~ 70 Hz.
- * Input Burden : Voltage 0.25 VA / Unit, Current 0.25VA / Unit, at 50 / 60 Hz

OUTPUT :

- * DC Current : 0 ~ 20mA DC
- * Load resistance drive : output drive 10 VDC maximum. OR
- * DC Voltage: 0 -10 V DC
- * Load resistance drive : Output drive 5mA maximum
- * Output Protection : No Damage even if output is open or Short Circuit.
- * Output Response Time : <1 Sec.
- * Digital Output Load : RS485 Output, Isolate Type with
- * MODBUS RTU mode. 4800, 9600, 19200 Baud Rate, User Selectable

PERFORMANCE :

- Accuracy : V, A, W, = $\pm 0.2\%$ Fs + 2 Counts at 23° C $\pm 3^\circ$ C.
Var, WH, VarH, PF = $\pm 0.4\%$ rdg + 2 Count,
Hz = $\pm 0.02\%$ Fs + 1 C at 23° C $\pm 3^\circ$ C.
- Display Range : V, A, W, Var, P F, Hz, 0.56" Super RED LED
4 Digits = 0 ~ 9999 Counts, PT, CT User Selectable.
W H; VarH, 0.36" Super Red LED,
7 Digits = 0 ~ 9999999 Counts.
- Response Time : < 1 Sec.
- Memory Capacity : 10 Years Power Off Memory for set Data
- Dielectric Strength : AC 2.8KV / Min, Input / Power / Case, DIN IEC 688.
- Impulse : 6 KV 1.2 x 50 μ S, ANSI C37.90a / 1983. DIN IEC 1000 4-5, 4-4.
- Stability : < 0.2 % / Year
- Operation Condition : -10°C ~ + 55°C; 20 ~ 95 % RH Non- Condensed.
- Storage Condition : - 40°C ~ + 75°C; 20 ~ 95 % RH Non- Condensed
- Power Supply : AC 85 ~ 265 V & DC 100 ~ 300 V ; 24 VDC (optional)
- Mounting : Panel Flush Mounting

Model KM 8100 A

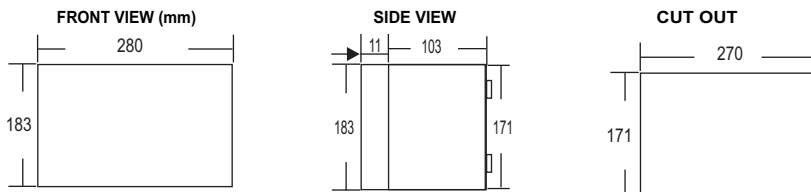
INPUT (V)		INPUT (C)		OUTPUT		SETTING FUNCTION		AUX. POWER	
A	55 ~ 300V	A	1A	F	RS485 modbus	A	4 Units Hi-Lo set	C	DC 24V
C	300 ~ 600V	B	5A	O	4 Units Analog			F	AC 85 ~ 265V
Y	SPECIAL	Y	SPECIAL	M	4 Units Analog+RS485				DC 100~300V
				N	NONE	N	NONE		
				Y	SPECIAL	Y	SPECIAL	Y	SPECIAL

In 3 4 system Voltage (INPUT (V)) : is Line - Neutral Voltage

When ordering specify Model code number and variable (e.g. 8100A-A-A-F-A-F)

Code number : Model - Input Voltage - Input Current - Output - Setting - Auxillary power.

DIMENSION :



All Specifications are subject to change without prior notice