

### FEATURES :

- Output / Display / Setting Range User Selectable
- Dual Aux. Power 110/220V AC
- High Accuracy 0.1% FS + 1 Count
- Analog or Digital RS485 Output



Ordering : DMP

Input Signal		Setting Function		Output Signal		Aux. Power	
A	200 Ω ~ 10KΩ	A	Hi-Lo Setting	A	0 ~ 10mA	A	AC 110/220V (Dual Power)
		B	Hi-Hi Setting	B	0 ~ 20mA	C	DC 24V
		C	Lo-Lo- Setting	C	4 ~ 20mA	D	DC 110V
				D	0 ~ 5V	E	DC 125V
Y	Other	N	None	E	1 ~ 5V	F	AC/DC 85 ~ 265V
				F	RS-485		
				N	None		
				Y	Other		

Specify code number and variable.

Code number : model - input - Setting function - output - power

(e.g. DMP - A - A - B - A)

### SPECIFICATIONS :

#### OUTPUT & DISPLAY :

DC Current : 0 - 20 mA DC

Load Resistance Drive : Output drive 10 VDC maximum

Output Load Resistance

0 - 10 mA : 1000 Ω

0 - 20 mA : 500 Ω

4 - 20 mA : 500 Ω

DC Voltage : 0 - 10 V DC

Load Resistance Drive : Output drive 5mA maximum

Output Load Resistance

0 - 5 V : 1 KΩ

1 - 5 V : 1 KΩ

0 - 10 V : 2 KΩ

Output Response Time : ≤ 1 Sec.

Digital output Load : RS-485 Output, 1200, 2400, 4800, 9600, 19200 Baud Rate, User Selectable.

Display Range : 0.56" Super Rate LED 4-1/2, 5 Digits, ± 19999 Counts. Display Range User Selectable.  
Memory for Tare Weight.

### INSTALLATION & PERFORMANCE :

Accuracy : 0.1% FS + 1 Count at 23°C ± 3°C.

Setting Function : Dual Setting & Contact Points, Setting Function User Selectable.

Setting Range : ± 19999 Counts User Selectable.

Dead Band : 0 ~ 9999 Counts User Selectable.

Time Delay : 0 ~ 99 Sec. User Selectable.

SPDT Capacity : AC 120V 5A, 250V 3A, DC 24V 3A.

Stability : ≤ 0.2% / Year.

Temperature Coefficient : ≤ 100ppm / °C From 0 ~ 60°C.

Operating Condition : -10°C ~ + 55°C 20 ~ 95% RH Non-Condensed.

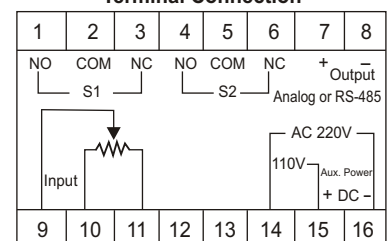
Storage Condition : -40°C ~ + 75°C 20 ~ 95% RH Non-Condensed.

Power Supply : AC or DC ± 20%, 50 / 60Hz.

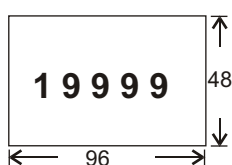
Outline Dimension : 1/8 DIN 96(W) x 48(H) x 135(D) mm.

Mounting : Panel Flush Mounting.

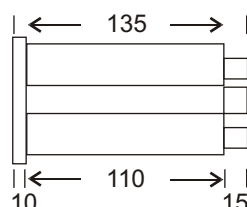
#### Terminal Connection



#### FRONT VIEW (mm)



#### SIDE VIEW



#### CUT OUT

